

Welcome to Girlguiding Cornwall

We're so glad you're joining us. Thanks to you, more girls will gain confidence, feel empowered and have great adventures and we hope that you'll enjoy everything guiding has to offer too.

Whatever role you have chosen we can't wait to welcome you to Girlguiding Cornwall.

Cornwall is one of 16 Counties/Islands that make up Girlguiding South West England. This covers an area from Cornwall to Berkshire and Gloucestershire to Hampshire, together with Guernsey, Jersey and the Isle of Wight.

A few words from our County Commissioner Sue Harris



Welcome to Girlguiding Cornwall which includes the Isles of Scilly, so you can immediately see that we are a diverse county. That's the ethos of Girlguiding, you can be yourself. We are a welcoming group who like to have fun with and without our young members so come along to our events and join the fun. I look forward to meeting you.

Getting to know your county

We are lucky in Cornwall that our leaders have a great support network, This is offered through division and district commissioners, section advisers, training opportunities and membership support.

County Team

County Commissioner – Sue Harris

Assistant County Commissioners – Anita Parsons & Jessica Rush

County President – Jill Jeffs

Divisions

Caradon

Carrick North

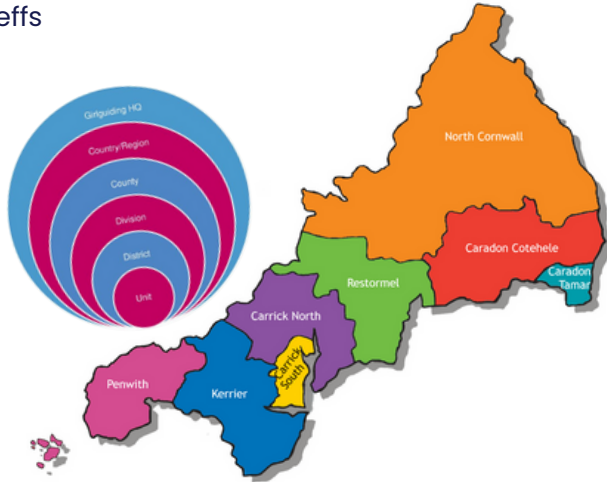
Carrick South

Kerrier

North Cornwall

Penwith

Restormel



Key links!

Girlguiding GO: go.girlguiding.org.uk

Learning platform: learning.girlguiding.org.uk

You can keep up to date with information in our County by visiting:

www.girlguidingcornwall.org.uk

 [@girlguidingcornwall](https://www.facebook.com/girlguidingcornwall)

 [@girlguidingcornwall](https://www.instagram.com/girlguidingcornwall)

 [@guidingcornwall](https://www.x.com/guidingcornwall)

 [@girlguidingcornwall](https://www.tiktok.com/@girlguidingcornwall)

Girlguiding programme



4-7 years



7-10 years



10-14 years



14-18 years

The structure of our programme means girls can grow along with the themes from rainbows right up to rangers.



Express Myself



Skills for my Future



Be Well



Take Action



Have Adventures



Know Myself

What can you do?

Unit leader

Run the unit, leading a team, and planning and delivering a high-quality programme of activities and events.

Young leader

Aged 14-18 you can become a young leader. In this role you'll join a Rainbow, Brownie, or Guide unit team developing your skills in leadership, communication and team working.

Unit helper

Provide valuable support to the unit leadership team.

Occasional helper

Join the fun without committing to weekly meetings.

Coordinator/Adviser

Specialist in an aspect of the guiding programme or a specific activity.

Inspire

Community for women aged 18 to 30 is fun, flexible and tailored to you.

Trefoil Guild

Adults can complete badges and go on adventures too! Or, Meet like-minded people to share your next adventure - whatever that might be!

Code of conduct

As a Girlguiding volunteer you must always:

- Be a **good role model** with behaviour and an attitude that are in line with our **values** and **the Promise**.
- Comply with all applicable **UK laws and guidance**. If your unit is based outside the UK or you are part of an activity outside the UK, you must also abide by the law of that country.
- Make sure you follow Girlguiding **policies and procedures** and re-read them regularly so you are informed of updates. If you have gaps in your understanding, talk to your local commissioner or adviser.
- Deliver the **Girlguiding programme** to young members if you are a unit volunteer. When volunteering with adults in guiding, support them to meet the Girlguiding programme requirements, to play your part in giving a consistently great Girlguiding experience.
- Be **responsible and accountable** in the way you perform your role.
- Be fair and treat everyone with respect and dignity in accordance with our **equality and diversity policy**.
- **Respect privacy** in line with our policies and guidance.
- **Communicate** in an **open and respectful** way, whether in person, by phone, writing or digital media.
- **Work together** with Girlguiding members, their parents or carers and members of the public to promote Girlguiding's **mission and values**.

As a Girlguiding volunteer you must not act fraudulently or dishonestly. Or do anything which brings, or is likely to bring, Girlguiding into disrepute or have a negative impact on Girlguiding or its reputation.

Wider Girlguiding community

You can keep up to date with information in our Region by visiting:
www.girlguidingsouthwest.org.uk

 @girlguidingswe

 @girlguidingswe

 @girlguidingswe